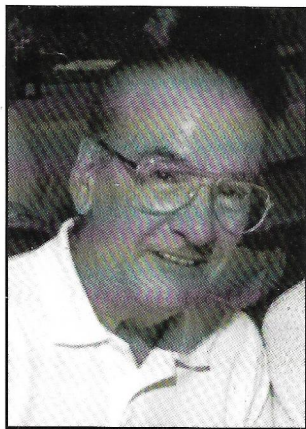


"Loner" found niche in NMRA

Barrett Snyder, earns MMR #279



Barrett Snyder's interest in scale model railroading developed while he was a hobby "loner" during the mid-1950s, after a brief venture into Lionel with first son, Cliff.

Later he, and two other employees of then-Wyandotte Chemicals Corp., joined up with certain other local modelers to form the Switchmen, a metro Detroit area club still in existence. His Green Mtn. Central RR, a point-to-point layout with interchange facilities,

was built during this time.

Barry's career in advertising-sales promotion was to serve his model railroading activities well: construction articles for *Model Railroader*, a two-times hitch as North Central Region's *Hot Box* editor, and development of the initial publicity program for the NMRA headquarters building. One of his articles, titled "South Lyon Station", first

appeared in the January 1960 issue of *MR*.

Attention to model details earned for Barry recognition on the Regional level for his scratchbuilt structures and kit-built rolling stock. Encouraged by the local contests, he decided to try for Achievement Program recognition, and Cars and Structures represent two of his earliest certificates.

Over the following years, Barry busied himself with family, career and hobby; attending Regional meets, and "train chasing" with other members of his club.

His model railroading activities became side tracked for most of the 1980s. A career move to Lansing, Mich. for Barry and wife Edna, saw a life style centered around apartment living and later, the freedom of travel their motorhome offered. During this time, Barry returned to a first love: scale model aircraft. Today, a number of his WWI biplanes in 1/48th scale are on permanent display at the Kalamazoo Aviation History Museum.

Returning to model railroading a few years after retirement in 1989, Barry has built another, smaller layout in a spare room of his home in Howell, Mich. His Detroit & Rangeley Lakes follows the operations of the two-footers of Central Maine in the 1930's, and features a connection

between a narrow-gauge (HO_n30) railroad and a standard gauge carrier.

His Certificates of Achievement, including the two

referred to above, are for: Model Railroad Author, Association Volunteer, and Official, Chief Dispatcher, and Master Builder, Scenery.